

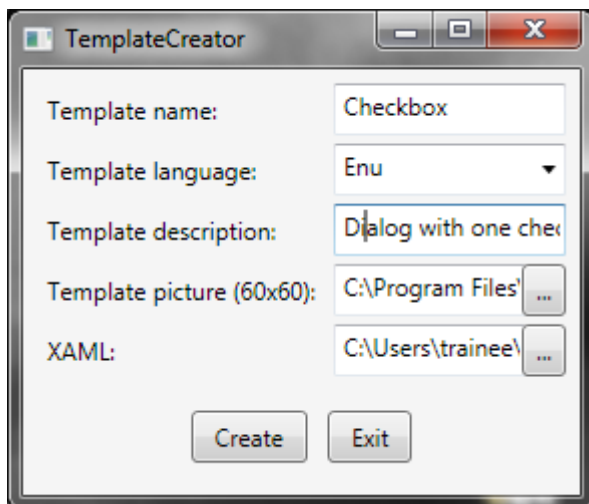
## How to create templates for the Customized Dialog in VENUS

It is possible to create your own templates for the customized dialog in VENUS two (and higher). These templates will be visible in the startup selection window.

To create new templates, a special software tool (the template creator) is needed. To install this tool, copy the template creator in the folder C:\Program Files\HAMILTON\Bin. Execute the installation by running the TemplateCreator.exe.

Open your method and create a new template (e.g. with a company logo, special buttons etc). If everything is fine, use the EXPORT button and save the new dialog as XAML - file. Keep in mind where you store this \*.xaml file.

Open the Template creator. Fill in the dialog box as follows:



**Template Name:** Your new template's name (please pass a clever name, not 'MyTemplate1')

**Template Language:** Use 'Enu' to make it available on all systems\*

**Template description:** Details for your template

**Template picture:** Select a picture to be displayed in the template selectionbox

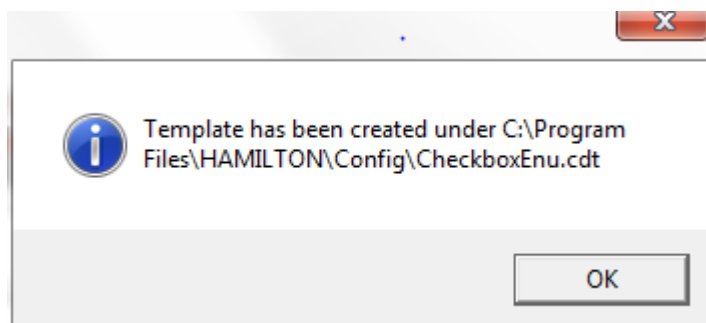
**XAML:** Pass the storage location and name of the new template

\* Important:

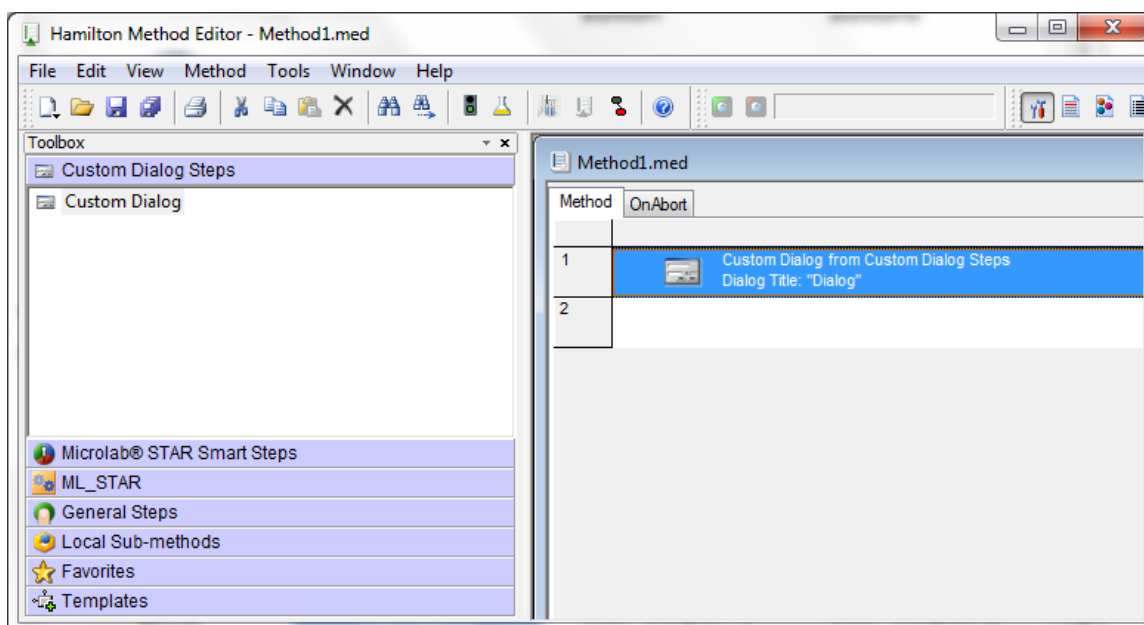
The template language have to be the same as the computer have otherwise choose 'Enu'

Press 'Create'

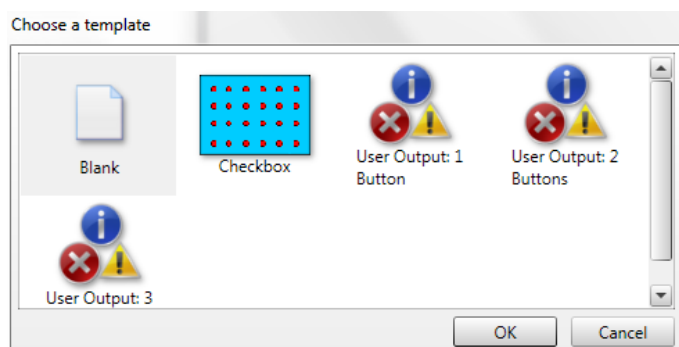
The template creator generate a cdt File. In the screenshot below, you can see the confirmation message for a new template called 'CheckboxEnu.cdt'. The file has been saved under C:\Program Files\HAMILTON\Config. Congratulations, you have created a new customized dialog template!



To use this new template, open a method and drag and drop a custom dialog step into your method.



In the 'Choose a template' – Dialog, your new template appears with the picture you passed.



Now, make the necessary changes on the custom dialog.